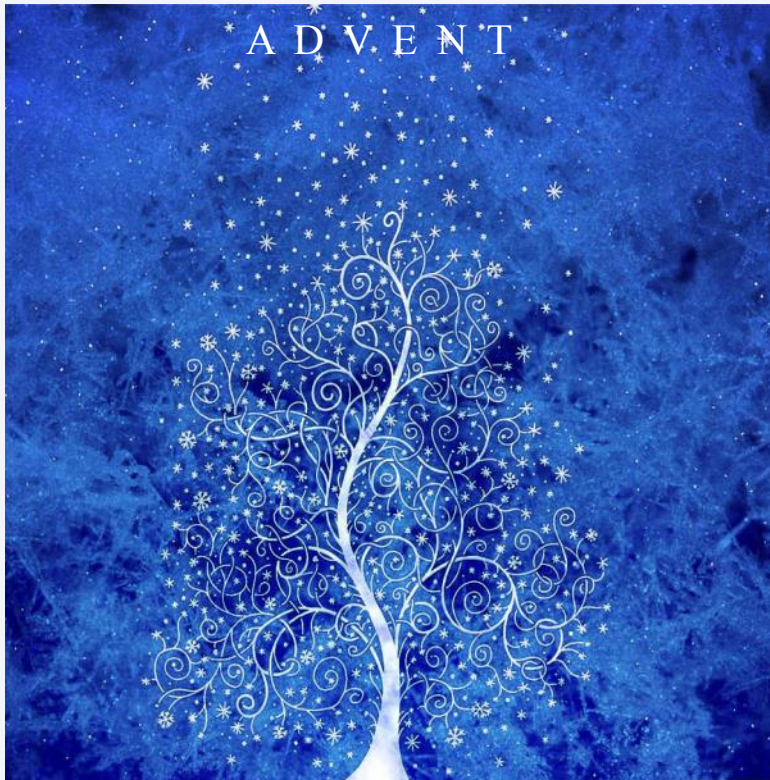


Wellesley Village Church

Congregational † United Church of Christ



*Season of
HOPE, PEACE, LOVE & JOY
found in Christ.*

*You are welcome to keep this monthly bulletin folder
or leave it in the pew for reuse.*

A Musical Advent ~ Sundays at Village Church

Nov. 26 ~ Advent I ~ 9am with Communion & 10am

Sermon "Duet" by Rev. Liz Garrigan-Byerly and Jodi Hitzhusen

Family Promise Host Week through Dec. 3

Dinner hosts and set up help needed. For information on volunteering or orientation contact Christina Oliver @ christina.oliver20@gmail.com or 617-529-9246 or Diana Carroll @ diana.carroll4@gmail.com or 617-435-5383.

Advent Workshop 5-7pm, 2nd floor classrooms

Dec. 3 ~ Advent II ~ 9am & 10am, Communion @ both services

Christmas Carol Communion Liturgy

HOME Store - Sat. Dec. 2, 10am-4pm & Sun. Dec. 3, 11:15am-1:30pm

Homeworkers Organized for More Employment in Orland, Maine will provide a wonderful selection of handmade gifts for all ages and price ranges.

City Mission Coat Drive through December 10

Drop off NEW coats on the coat rack in Village Common

(large teen sizes, 10-20 or L, XL, XLL greatly needed!) and any size for adults.

Holiday Stroll - noon-6pm, Church will be open, Sharing Ministry will provide hospitality.

Dec. 10 ~ Advent III ~ 9am with Communion & 10am

Christmas Cantata by David Carrier & Senior Choir

Alternative Gift Fair - 11:15 - 1:30pm

Purchase meaningful alternative gifts for friends and family by donating to life changing organizations. Please bring your checkbook in order to shop and give generously.

Youth Pageant Rehearsal, 9:30am-11:30am

Dec. 17 Advent IV / Christmas Sunday ~ One 10am Service

Youth led Christmas Pageant directed by Dr. Kevin McDonald

5:30pm **Blue Christmas: A Service of Healing** – Chapel with Eric Ogi

Christmas Eve Services ~ Dec. 24

10am ~ Morning Service of Carols & Communion in the Chapel

4pm ~ Family Worship with Children's Pageant *

Mandatory Rehearsal for Participants: Saturday, Dec. 23 9am-Noon

Arrive to church Dec. 24 @ 2:45pm

8pm ~ Candlelight Christmas Eve Worship

10pm ~ Candlelight Christmas Eve Worship

Family Life @ Village Church

Children's Church

Infant-threes: *Family Worship Room, 1st floor, beginning @ 9:50am*

Pre-K/Kindergarten: *Upper Floor @ 9:50am*

Grades 1-5: *begin in worship then proceed to Upper Floor*

6th & 7th Grade Youth Group: *Lower Level*

Grade 8: *begin in worship then proceed to Upper Floor*

Youth Groups & Choirs

6th & 7th Grade Youth Group: *10am Sundays, Lower Level*

8th Grade Youth Group: *6:30-8pm, every other Tuesday w/ dinner*

Grade 9 – Confirmation: *7-8:30pm Wednesdays, Lower Level*

High School Youth Group: *Sunday evenings, 7pm, Lower Level*

Youth Choir: *(Grades 6-12): Wednesdays 6:15pm, Lower Level Choir Room*

Nov. 26 ~ Advent Worship 5-7pm

Dec. 2 ~ Gingerbread House Making & Talent Show 5-8pm

Dec. 6 ~ Knitting with a Mission (Grades 1-12) 1:30pm

Dec. 10 ~ Christmas Sunday Youth Pageant Dress Rehearsal 9:30-11:30am

For Parents

Mom's Group: *Dec. 13, 7:30 – 9pm, home of Rev. Sarah Butter*

Dad's Group: *Dec. 12, 7pm, meets 2nd Tues. each month, Lower Level – Rm B2*

Faith & Life Formation

Senior Life Group, *Wednesday, Dec. 20, 10:30am – Noon*

Wednesday Morning Bible Study, *Wednesdays, 9am, Library*

Yoga, *(gentle) Tuesdays 9:15am, (moderate) Thursdays, 4:15pm*

Thursday Night Bible Study, *Thursdays, 7pm, Upper Level - Rm. 215*

Exploring the Bible III: The New Testament, *Sundays, 10am - Parlor,*

Wednesdays, 7:30pm - Library, Thursdays, 11am - Parlor

Knitting & Sewing Group, *Wednesdays, 9:30am - Seminar I*

Christian Meditation, *Sundays, 5pm, Parlor*

Save the Date

Stewardship Pick Your Party! - *January dates and details to come*

Share the Dream Service with Charles Street AME, *January 14, 10am only*

Common Cathedral Art Show, *January 28*

**For details & more information, or to sign up for events
visit our website, www.wellesleyvillagechurch.org,
where you can also sign up to receive our weekly Enews.**

Welcome to Wellesley Village Church!

*As an Open & Affirming Congregation of the United Church of Christ
Whoever you are, wherever you are on the journey of life and faith,
we are delighted you are here!*

We Welcome All!

We extend a welcome as broad as the outstretched arms of God,
who calls us together to pray, sing, and rejoice in God's glorious presence.

We welcome children to participate fully. Children are invited to visit and use:

- + The "pray ground" in the Chapel during 9am worship;
- + The worship supplies on the steps by the piano in the Sanctuary during 10am worship.

Childcare for under 5 is available in the Family Worship Room,
located just outside of the sanctuary.

Children 1st grade and older begin in worship before transitioning to
Village Children's Church.

We Value Community!

Visitors, we want to help you connect with our community.

Please fill out a Connection Card found in the blue folders or sign the welcome book and pew pads. Questions about our life together are always welcome, or find information on our website.

God Calls You By Name, and So Do We!

Please wear a nametag; temporary stickers are available and you
may request a permanent nametag anytime.

We Like to Linger!

Please stay for refreshments and conversation in Village Common after both services; ask a
neighbor to show you the way!

Susan Sullivan ~ Moderator

Phil Carens ~ Vice Moderator

Ken Sipe ~ Immediate Past Moderator

The Rev. Dr. Sarah Sarchet Butter ~ Senior Pastor

Associate Pastors

The Rev. Pam Emslie

The Rev. Liz Garrigan-Byerly

Pastoral Resident

The Rev. Eric Ogi

Ministry Directors

Michaela McDonald – Children's Ministry

David R. Carrier – Music

Jodi Hitzhusen – First Worship Music

Dr. Kevin McDonald – Youth Music

Erin Donato – Administration



2 Central Street, Wellesley, MA 02482

Office: 781-235-1988 – Urgent Pastoral Care Cell: 781-591-7451

www.wellesleyvillagechurch.org